

koaty™

CW325

VALUE WIRELESS KEYBOARD & MOUSE COMBO



Dear Valued Customer,

We appreciate your trust in our products and sincerely thank you for selecting Koaty product. Your choice means a lot to us.

We're committed to providing you with a great experience. If you have any suggestions for improvement, or a new product idea please share them with us. Your feedback is invaluable.

Wishing you a fantastic experience with our product!

Best Regards,
Team Koaty



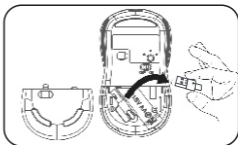


INSTRUCTION MANUAL

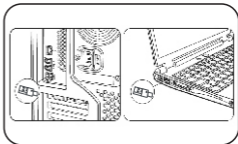
PLEASE READ ALL INSTRUCTIONS CAREFULLY
AND RETAIN FOR FUTURE USE

How to Connect

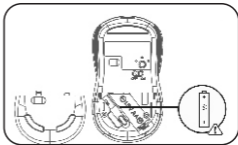
Step 1: Flip mouse over, remove the back cover, and take out the USB Dongle Stored inside the mouse.



Step 2: Plug the USB dongle into your PC/Laptop



Step 3: Insert one 1.5V AA battery into the mouse. Be sure to align with the positive (+) and negative (-) signs.



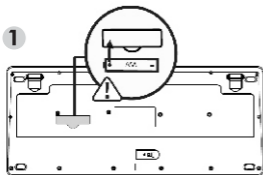
Step 4: Turn on the Mouse by flipping the power switch to the "On" position.



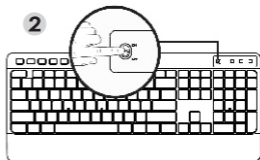
Package Contents

Wireless Keyboard
Wireless optical Mouse
User Manual
Nano Receiver (USB)
AA Battery & AAA Battery

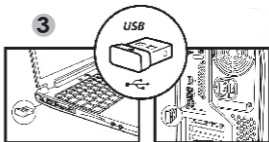
SETUP



1. Insert one 1.5 V AAA battery into the keyboard according to the positive and negative sign. And turn on the power switch of keyboard.



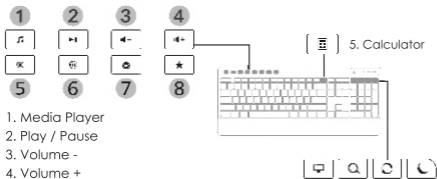
2. Plug the USB receiver into the USB port of your computer.



3. The mouse and keyboard are ready to work after the driver is installed automatically on the computer.



INDEPENDENT MULTIMEDIA KEYS



1. Media Player
2. Play / Pause
3. Volume -
4. Volume +
5. Mute
6. Webpage
7. Mailbox
8. Collect

- a. My computer
- b. Search
- c. Refresh
- d. Dormancy

FEATURES

1. The mouse and keyboard share a common receiver. And the receiver is in the battery compartment at the bottom of the mouse.
2. Adjustable mouse DPI levels: 800-1200-1600.
3. It has automatic Sleep mode and Wake up mode. When the combo hasn't been used for 10 min, it will enter sleep mode. Press any button to wake up the combo. If it will be unused for a longtime, turn off the power switch to save power.
4. Compatibilities: Windows XP / VISTA / 7 / 8 / 10; Mac
(Functions of combination keys are not available).

SOLUTION TO PROBLEMS OF WAKING COMPUTER FROM SLEEP MODE BY KEYBOARD

Please verify that your device is allowed to wake the computer by following steps.

1. Open the keyboard control panel. A. In Windows Vista or Windows 7 and later versions, Click start, type keyboard in the Start search box, and then click keyboard or Microsoft keyboard in the program list. B. In Windows XP and earlier versions, click start, click Run, type control keyboard, and then click OK.
2. Click the hardware tab, and then click properties.
3. Click the change settings button (Not: This step requires Administrator access).
4. Click the power management tab, and then verify that the Allow this device to wake the computer is enable.
5. Click OK, and then click OK again.



CONSIDERATIONS

1. Use 1.5 V AAA or AA battery only. To prevent from damage to internal elements, avoid using excessive-voltage batteries. If the product will be unused for a long time, take out the battery to prevent from corrosion.
2. The product adopts the 2.4 GHz wireless transmission with a 10-meter transmission distance. The distance may be shortened for big obstructions and low battery.
3. For the first use, the product may fail to work (connection error etc.) for it has been unused for a long time. Try pairing again.

Care and Maintenance:

Read the following recommendation before using the product. The product contains Class 1 LED. Operating temperature between 0° C and 40° C

Use Guidelines: Safe & Proper Use of Your Product

- Do not open or modify the product except for battery removal and replacement.
- Do not disassemble or attempt to service this product because there is a risk of radiation exposure, which could injure you.
- Do not direct the infrared/laser beam at anyone's eye or a reflective object.
- Do not immerse product in any liquid or expose to heat or moisture.
- If product is exposed to out-of-range temperature environments, power off the device until temperature has stabilized within the specified operating temperature range.
- This is not a Children's Product and is not designed or intended primarily for use by children under 10 years old. Supervise all children using this product.
- This product is safe under normal and reasonably foreseeable operating conditions. If the product is operating improperly, contact Koaty support.
- Batteries, electronic and electrical equipment should not be disposed of with household waste. Wherever possible, they should be segregated and brought to an appropriate collection point to enable recycling and avoid potential impacts on the environment and human health.

Koaty Limited Hardware warranty -

- Koaty warrants that its hardware product shall be free from defects in materials and workmanship for the length of time identified on your product package beginning from the date of original retail purchase.
- Product must be returned to Koaty for any service or repair
- Any changes or modifications to the product that are not expressly approved by Koaty may void the user's authority to operate the equipment and your warranty.
- Koaty's entire liability and your exclusive remedy for any breach of warranty shall be, at Koaty's option, to repair or replace a functional equivalent of the product.
- Koaty's Limited Warranty covers only those defects that arise as a result of normal use of the product and does not cover any other defects, issues, or problems, including those that arise as a result of

1. Improper maintenance, unauthorized modification or service, loss or damage in transit, or malicious code not introduced by Koaty.
2. Software, media, parts, or supplies not provided or supported by Koaty, including interoperability or compatibility problems;
3. Operation outside the product specifications;
4. Accident, misuse, liquid spills, abuse, contamination or other causes that are not defects in materials or workmanship.



- As with all batteries, the maximum capacity of any battery included in the Koaty Hardware Product will decrease with time or use and battery life cycle will vary depending on product model, configuration, loaded applications, features, use, wireless functionality, and power management settings. Accordingly, a decrease in maximum battery capacity or battery life cycle is not a defect in materials or workmanship, and this Limited Warranty does not cover changes in battery capacity or battery life cycle.
- Koaty has no obligation to replace or refund and cannot repair until you return the defective product to Zora Technologies.
- Koaty Hardware Products presented for repair may be replaced by refurbished Hardware Products of the same type rather than being repaired; refurbished parts may be used to repair Hardware Products; and replaced or repaired Hardware Products will be functionally equivalent in performance and reliability to original products that have been discontinued.

WARNING

- **WARNING!** Risk of explosion if battery is replaced by an incorrect type. Dispose of used batteries according to the instructions issued by your local authority.
- **WARNING!** To reduce the risk of fire or burns, do not disassemble, crush, or puncture; do not short external contacts; do not dispose of in fire or water.
- **WARNING!** Keep the battery away from children.

Troubleshooting :

- Wireless technology works up to a 30-foot transmission distance but signal may be shortened due to obstructions or when battery is low.
- If connection is lost: turn mouse off, remove the battery, and unplug the USB dongle. Wait a few seconds, then insert battery back into mouse, turn mouse back on, and plug dongle back in. This should reset the connection.
- If above connection reset doesn't work, remove the battery, wait a few seconds, then Plug in the receiver first, then press the right button + left button, and insert the battery.
- Take out the battery from the keyboard and the receiver from the computer.
- Reinstall the battery into the keyboard, and plug the receiver into the USB Port of the computer.
- Press and Hold Esc + Q for three seconds, then turn on the Keyboard while holding the Esc + Q. Wait till the LED stabilises. Once the LED stabilises the Keyboard and the receiver are paired together again.
Please Note : Keyboard should be within 20 cm from the receiver.
- For Mouse, Plug in the receiver press and hold right click + left click for 3 seconds and then turn on the mouse power button. Continue pressing and holding the right click + left click buttons till the mouse LED stabilises. Once the mouse LED has stabilised the receiver and mouse are paired again.

Koaty is a Zora Technologies Trademark.

All other Third party logos are registered trademarks of their respective owners.

