

koaty™

WM711

ELITE WIRELESS MOUSE



Dear Valued Customer,

We appreciate your trust in our products and sincerely thank you for selecting Koaty product. Your choice means a lot to us.

We're committed to providing you with a great experience. If you ever have suggestions for improvement, or a new product idea please share them with us. Your feedback is invaluable.

Wishing you a fantastic experience with our product!

Best Regards,
Team Koaty





INSTRUCTION MANUAL

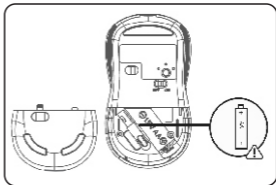
PLEASE READ ALL INSTRUCTIONS CAREFULLY
AND RETAIN FOR FUTURE USE

Package Contents

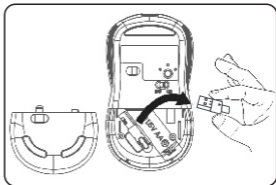
Wireless optical Mouse
User Manual
Nano Receiver (USB)
AA Battery

How to Connect

Step 1: Flip mouse over, remove the back cover, insert one 1.5V AA battery into the mouse. Be sure to align with the positive (+) and negative (-) signs.

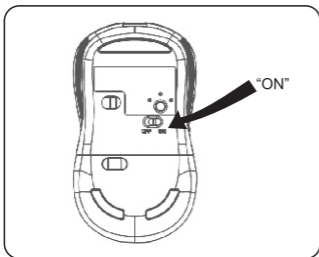


Step 2: Take out the USB Dongle Stored inside the mouse for pairing in 2.4GHz Mode.



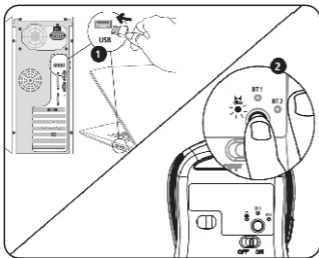


Step 3: Replace the back cover, Turn on the Mouse by flipping the power switch to the "On" position.



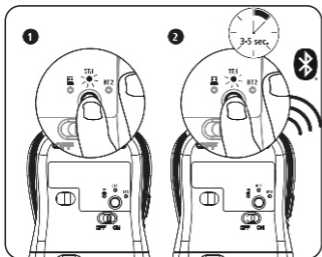
Step 4:

- 1 Plug the USB dongle into your PC/ Laptop
- 2 Pairing mode 2.4 Ghz

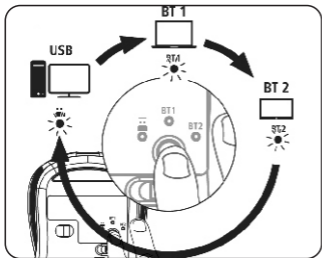




Step 5: Pairing mode Bluetooth



Step 6: Switch between 2.4 Ghz , BT 1 and BT 2 by pressing the button. Light glows corresponding to present connectivity mode.



**Care and Maintenance:**

Read the following recommendation before using the product.
The product contains Class 1 LED. Operating temperature between 0° C and 40° C

Use Guidelines: Safe & Proper Use of Your Product

- Do not open or modify the product except for battery removal and replacement.
- Do not disassemble or attempt to service this product because there is a risk of radiation exposure, which could injure you.
- Do not direct the infrared/laser beam at anyone's eye or a reflective object.
- Do not immerse product in any liquid or expose to heat or moisture.
- If product is exposed to out-of-range temperature environments, power off the device until temperature has stabilized within the specified operating temperature range.
- This is not a Children's Product and is not designed or intended primarily for use by children under 10 years old. Supervise all children using this product
- This product is safe under normal and reasonably foreseeable operating conditions. If the product is operating improperly, contact Koaty support.
- Batteries, electronic and electrical equipment should not be disposed of with household waste. Wherever possible, they should be segregated and brought to an appropriate collection point to enable recycling and avoid potential impacts on the environment and human health.

Koaty Limited Hardware warranty -

- Koaty warrants that its hardware product shall be free from defects in materials and workmanship for the length of time identified on your product package beginning from the date of original retail purchase.
- Product must be returned to Koaty for any service or repair
- Any changes or modifications to the product that are not expressly approved by Koaty may void the user's authority to operate the equipment and your warranty.
- Koaty's entire liability and your exclusive remedy for any breach of warranty shall be, at Koaty' option, to repair or replace a functional equivalent of the product.
- Koaty's Limited Warranty covers only those defects that arise as a result of normal use of the product and does not cover any other defects, issues, or problems, including those that arise as a result of

- 1.Improper maintenance, unauthorized modification or service, loss or damage in transit, or malicious code not introduced by Koaty.
- 2.Software, media, parts, or supplies not provided or supported by Koaty, including interoperability or compatibility problems;
- 3.Operation outside the product specifications;
- 4.Accident, misuse, liquid spills, abuse, contamination or other causes that are not defects in materials or workmanship.



- As with all batteries, the maximum capacity of any battery included in the Koaty Hardware Product will decrease with time or use and battery life cycle will vary depending on product model, configuration, loaded applications, features, use, wireless functionality, and power management settings. Accordingly, a decrease in maximum battery capacity or battery life cycle is not a defect in materials or workmanship, and this Limited Warranty does not cover changes in battery capacity or battery life cycle.
- Koaty has no obligation to replace or refund and cannot repair until you return the defective product to Koaty.
- Koaty Hardware Products presented for repair may be replaced by refurbished Hardware Products of the same type rather than being repaired; refurbished parts may be used to repair Hardware Products; and replaced or repaired Hardware Products will be functionally equivalent in performance and reliability to original products that have been discontinued.

WARNING

- **WARNING!** Risk of explosion if battery is replaced by an incorrect type. Dispose of used batteries according to the instructions issued by your local authority.
- **WARNING!** To reduce the risk of fire or burns, do not disassemble, crush, or puncture; do not short external contacts; do not dispose of in fire or water.
- **WARNING!** Keep the battery away from children.

Troubleshooting :

- Wireless technology works up to a 30-foot transmission distance but signal may be shortened due to obstructions or when battery is low.
- If connection is lost: turn mouse off, remove the battery, and unplug the USB dongle. Wait a few seconds, then insert battery back into mouse, turn mouse back on, and plug dongle back in. This should reset the connection.
- If above connection reset doesn't work, turn mouse off, wait a few seconds, then Plug in the receiver first, then press the right button + left button, and then turn on the power.

Koaty is a Zora Technologies Trademark.

All other Third party logos are registered trademarks of their respective owners.

